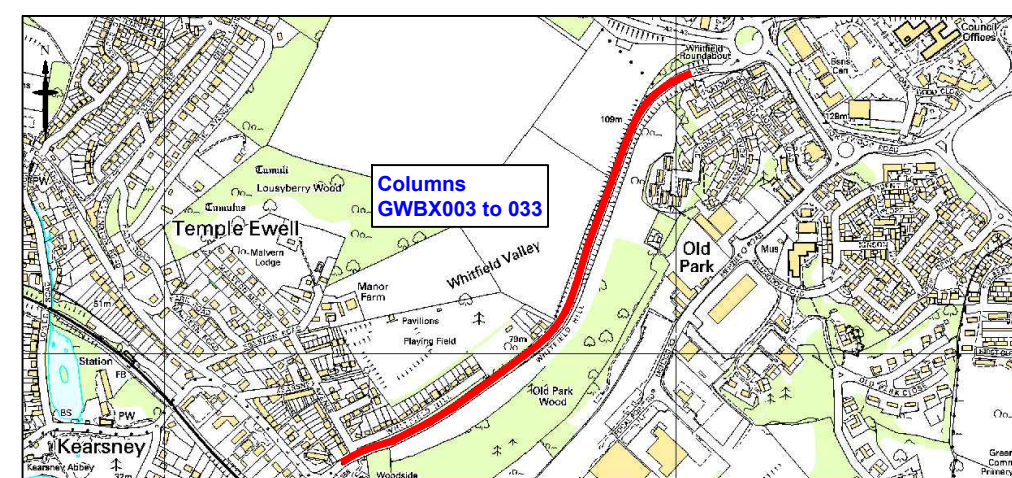
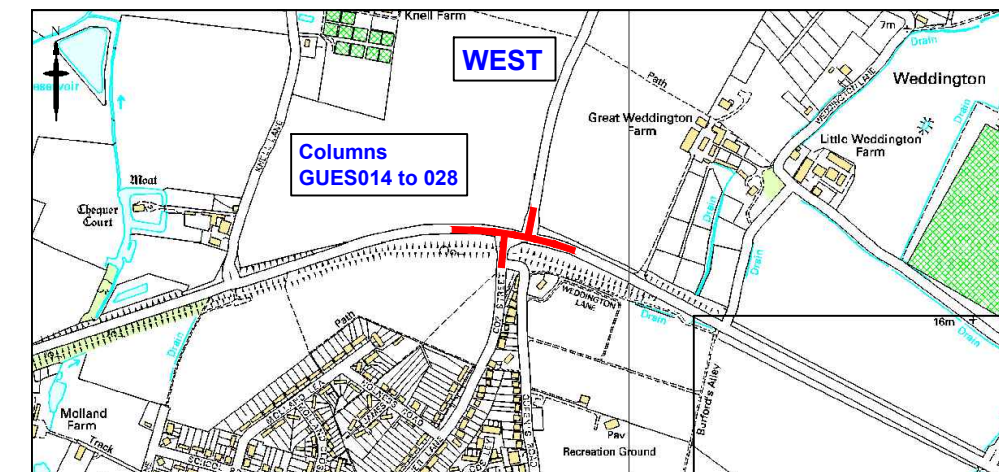


A256 EAST KENT ACCESS PHASE 1 - Locations A, B, C, D, E
Ramsgate Road (South)

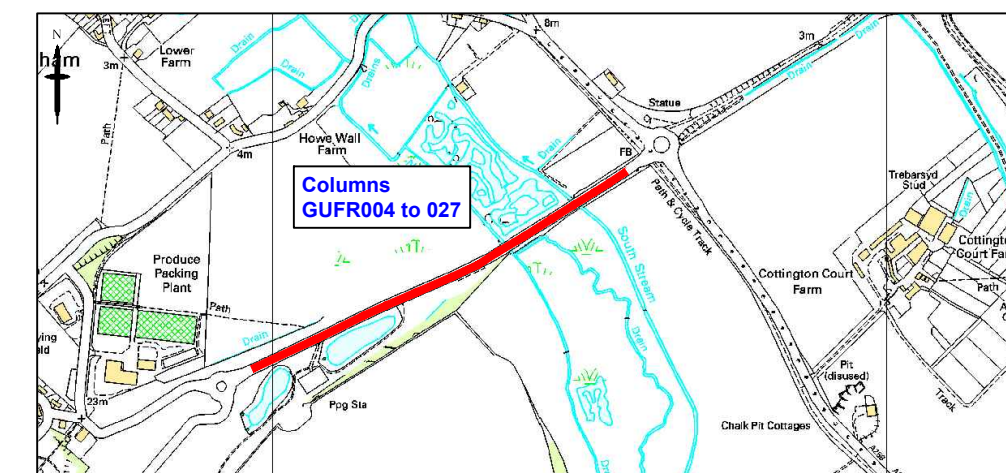
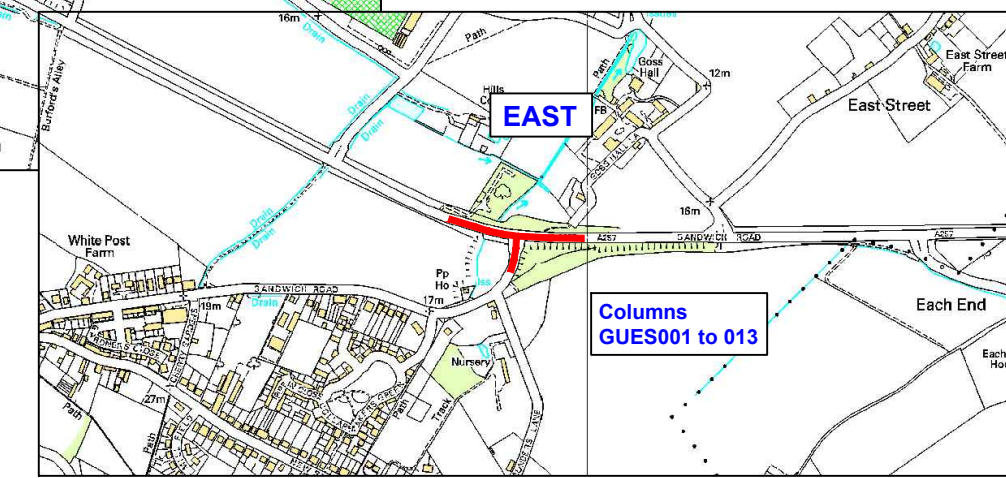


Whitfield Hill

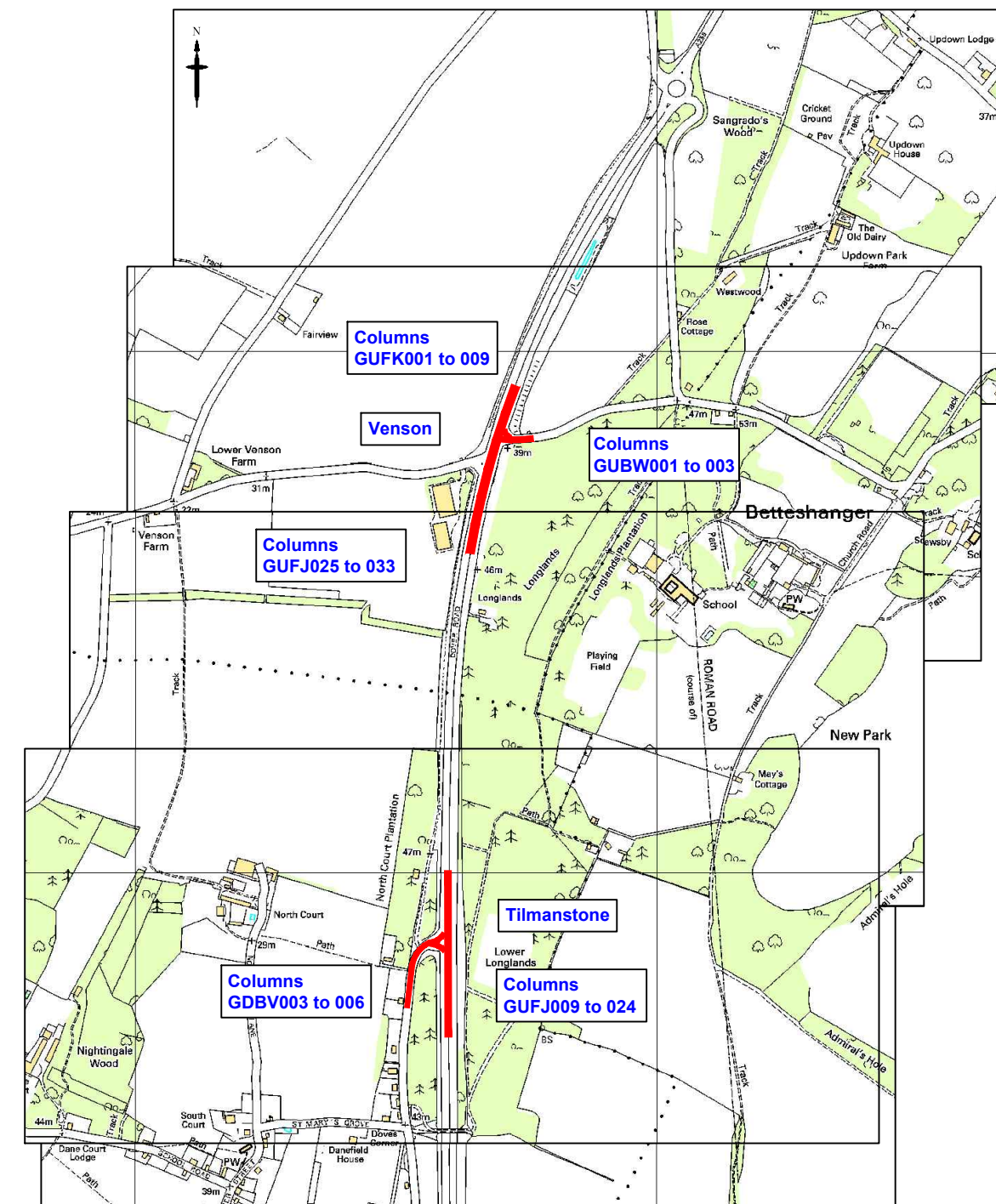
DOVER



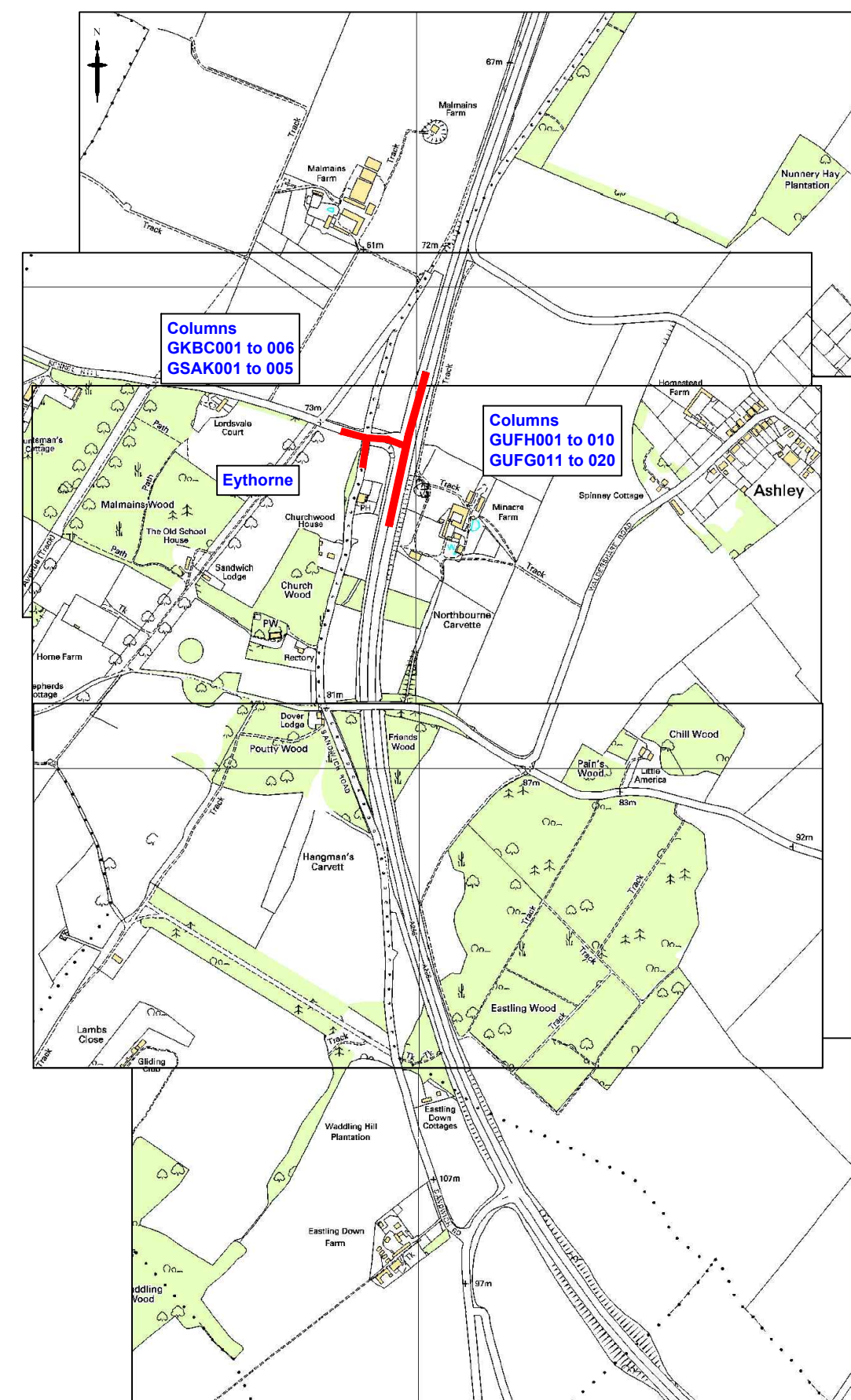
A257 Ash By-Pass -
Sandwich Road



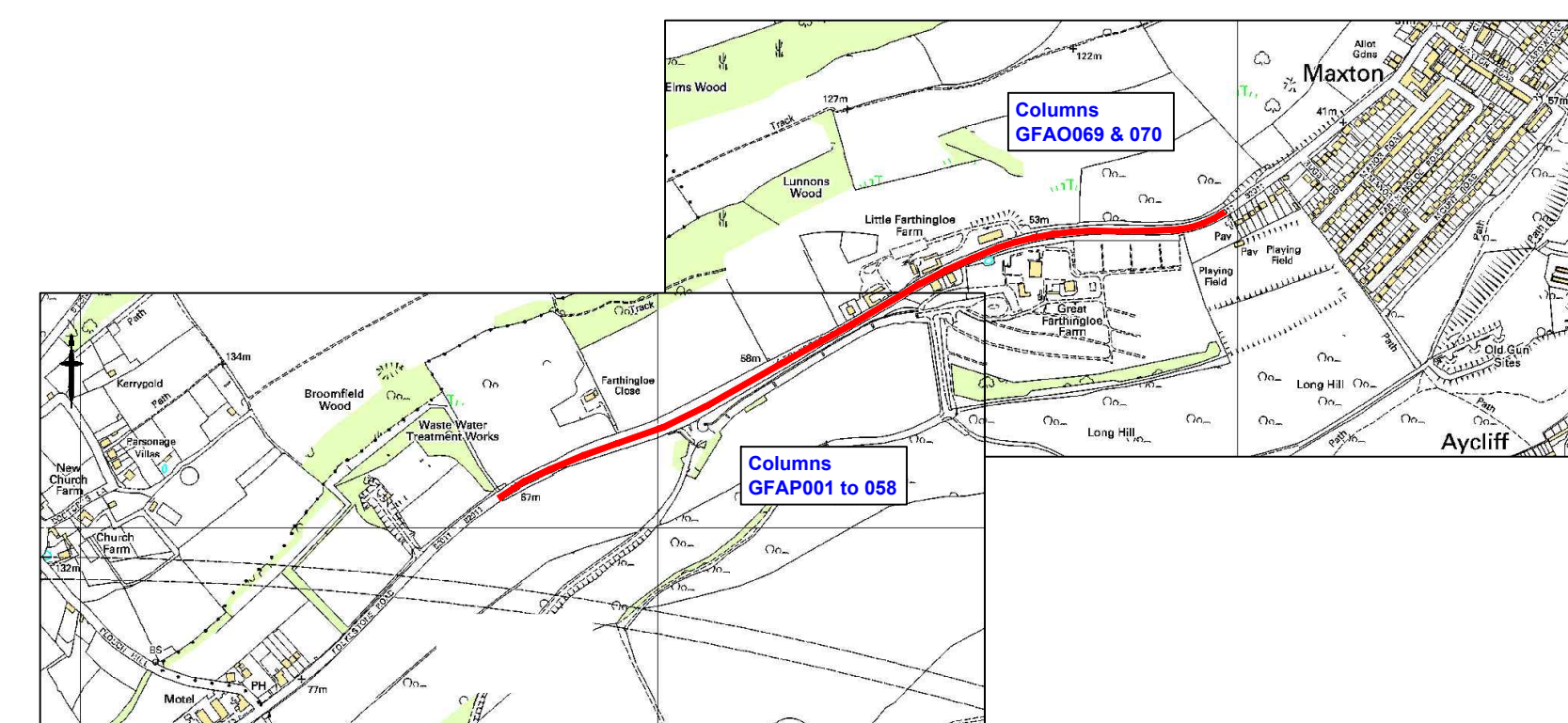
Betteshanger Business Park



A256 By-Pass Right Turn Lane - Venson and Tilmanstone



A256 By-Pass - Right Turn Lane - Eythorne



Folkestone Road, Farthingloe

KEY

- Extent of Columns to be switched off.
- GUES001 Column Ref No. of columns to be switched off.

Rev	Revision Date	Purpose of revision	Drawn	Checked	Approved
2	28/01/2013	Plan Revised for JTB	HC	CH	CH
1	22/01/2013	Notes changed to indicate switch off	HC	CH	CH
0	02/01/2013	-	HC	CH	CH



Kent County Council
Ashford Highway Depot, Javelin Way,
Ashford, Kent, TN24 8AD
Tel: 08458 247 800

Project Safe and Sensible Street Lighting
Phase 1
Trial Switch Off of Surplus Lights

Location Plan - Dover District

Drawing status For Consultation

Scale	Not to Scale	Do not scale
-------	--------------	--------------

Drawing number	KCC/HL/ESP/Dover/01	Rev	2
----------------	---------------------	-----	---